



MAITRI VIDYA NIKETAN EMSSS RISALI BHILAI  
TERM II EXAMINATION (2022-23)  
SUBJECT – GENERAL SCIENCE  
CLASS - V

TIME: 2 hrs.

M.M. 70

**Q1) Choose the correct options:-**

(7)

- 1) Which of the following part of the brain controls involuntary actions such as breathing?  
a) cerebellum b) Medulla c) cerebrum d) All three
- 2) Which of the following object will not form a shadow?  
a) Book b) Wood c) Clear glass d) Leaf
- 3) Which of the following is an example of wedge?  
a) Screw b) Tweezers c) Tongs d) Knife
- 4) Which of the following is formed from the dead remains of marine organisms?  
a) Coal b) Petroleum c) Gold d) Iron
- 5) Which of the following is an example of a Scavenger?  
a) Lion b) Deer c) Hyena d) Snake
- 6) Which among the following is the largest planet of the solar system?  
a) Jupiter b) Saturn c) Uranus d) Earth
- 7) Which of the following planet is the closest to the Sun?  
a) Earth b) Jupiter c) Mercury d) Venus

**Q2) Fill in the blanks:-**

(6)

- 1) It takes \_\_\_\_\_ minutes for sunlight to reach the Earth.
- 2) Plants are the \_\_\_\_\_ of all food chains.
- 3) Scientists that study fossils are called \_\_\_\_\_.
- 4) \_\_\_\_\_ are used to cut hard surfaces.
- 5) The darkest region of a shadow is called \_\_\_\_\_.
- 6) When our brain attains full size it weighs \_\_\_\_\_.

**Q3) Write True or False :-**

(6)

- 1) Spinal cord is protected by the skull.
- 2) Human arm is an example of third class lever.
- 3) We have taste buds for only four major tastes.
- 4) Gold, silver and platinum are used for making jewellery.
- 5) Days are longer in the winter months.

**Q4) Match the following:-**

(5)

- | Column A       | Column B                            |
|----------------|-------------------------------------|
| 1) Fungi       | a) Some light can pass through them |
| 2) Light       | b) Scavenger                        |
| 3) Plant       | c) It is a form of energy           |
| 4) Translucent | d) Decomposers                      |
| 5) Termites    | e) Producer                         |

**Q5) Define:- (any-3)**

(6)

- |                     |            |            |
|---------------------|------------|------------|
| a) Food chain       | b) Fossils | c) Fulcrum |
| d) Opaque materials | e) Machine |            |

**Q6) Give reasons:- (any – 3)**

(6)

- 1) Skin is considered a sense organ.
- 2) We should not watch Solar eclipse with naked eyes.
- 3) A knife can cut an apple but a screw cannot.
- 4) We should use coal and petrol carefully.
- 5) Earthworms are considered helpful for plants.

**Q7) Answer the following questions in one or two sentences :- (any-4) (8)**

- 1) How do plants make their food? What is this process called?
- 2) Write two uses of conglomerate.
- 3) What are metallic minerals?
- 4) Give two examples of wheel and axle.
- 5) Name the nerves present in our ears and nose.

**Q8) Answer the following questions:- (any-4)**

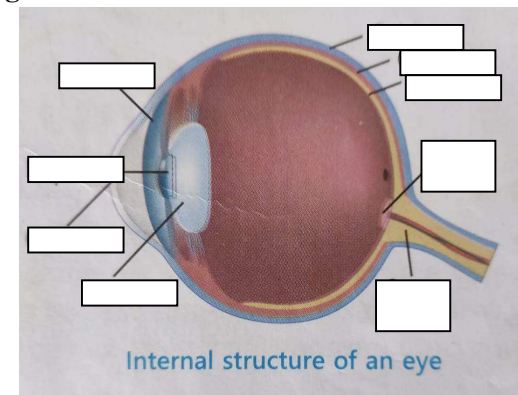
(16)

- 1) What are the characteristics of a shadow?
- 2) Differentiate between fixed and movable pulley.
- 3) How are plants and animals dependent on each other?
- 4) What is a reflex action? Give two examples of it.
- 5) What is a lever? Give two examples of each type of lever.
- 6) How is limestone different from marble?

**Q9) Label the given diagram :-**

(5)

(Eye)



**Q10) Draw and label any one of the given diagrams:-**

(5)

Parts of brain OR Types of lever